

Melbourne, 07 December 2016

Australia – Victoria

No. 349 (T) – 2016

PORT MELBOURNE

**PORT MELBOURNE WEBB DOCK WEST – PLANNED OUTAGE OF
NAVIGATION AIDS ADJACENT TO WEBB DOCK WEST**

Date: 07 December 2016

Details: Mariners are advised that works related to the routine maintenance on the low voltage power circuit at Webb Dock West will take place to ensure reliability of Nav Aids power Supply.

The maintenance will take place on about 07 December 2016 to 16 December 2016 in daylight hours 0800 to 1700.

Navigational Aids Impacted

- Without power: Nav lights 25, 26, 27, 29 and 31 will be isolated (off) during daylight hours 0800 to 1700 only.
- Backup power supply: Port Entry Light (PEL) UPS backed up – no effect on functionality

Further details can be obtained from Melbourne VTS on VHF channel 12.

Mariners are advised to exercise caution when navigating in the vicinity of above operations.

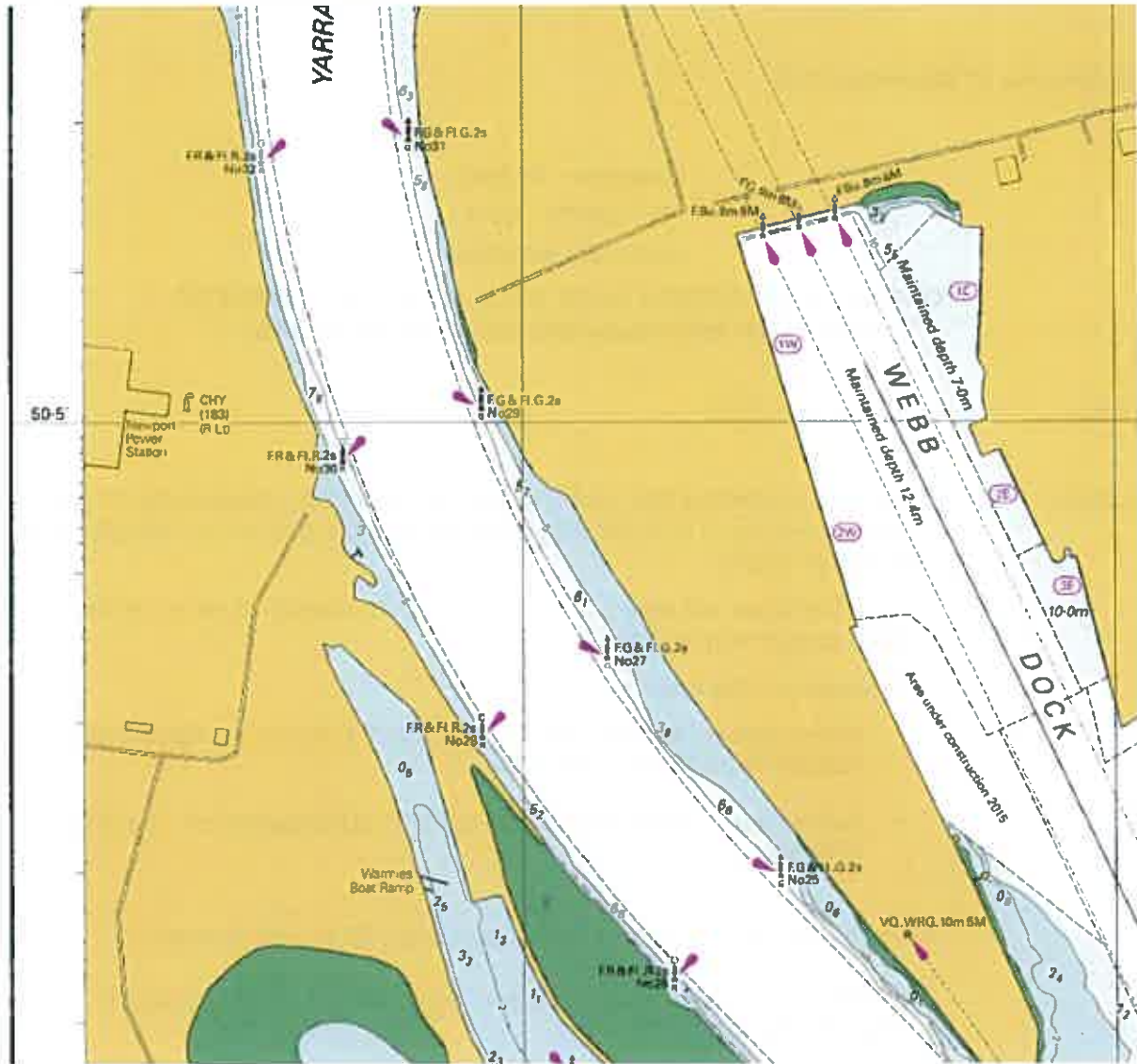
**Charts &
Publications**

affected: AUS 154.

Further notice: Further Notice will be issued.



**Roy Stanbrook
Harbour Master**



NOT FOR NAVIGATIONAL USE

This notice is a direction of the Harbour Master pursuant to section 232 of the *Marine Safety Act 2010* (Vic)
 The requirements of section 232(2) have been taken into account.

Victorian Notices to Mariners can be downloaded from the Victorian Ports Corporation (Melbourne) website
www.vicports.vic.gov.au