

Melbourne, 11 September 2017

Australia – Victoria

No. 233 (T) – 2017

**PORT OF MELBOURNE – MARIBYRNONG RIVER
BATHYMETRIC SURVEY**

Date: 11 September 2017

Refers: N/a

Details: Mariners are advised that Bathymetric survey will be carried out during daylight hours in the Maribyrnong River to the south of Shepherd Bridge in the immediate vicinity of Footscray Wharf (see chartlet below) from the 12 September 2017 for approximately 2 days.

The Survey will be conducted from the work boat Total 1 (see picture below) by Total Hydrographic, the works supervisor Tim Williams can be contacted by mobile: 0467 055 005 or VHF Ch 12.

For more information, contact Melbourne VTS on 9644 9700.

**Charts &
Publications**

affected: AUS 154

Further notice: Further notice will be issued.



**Andrew Hays
Deputy Harbour Master**

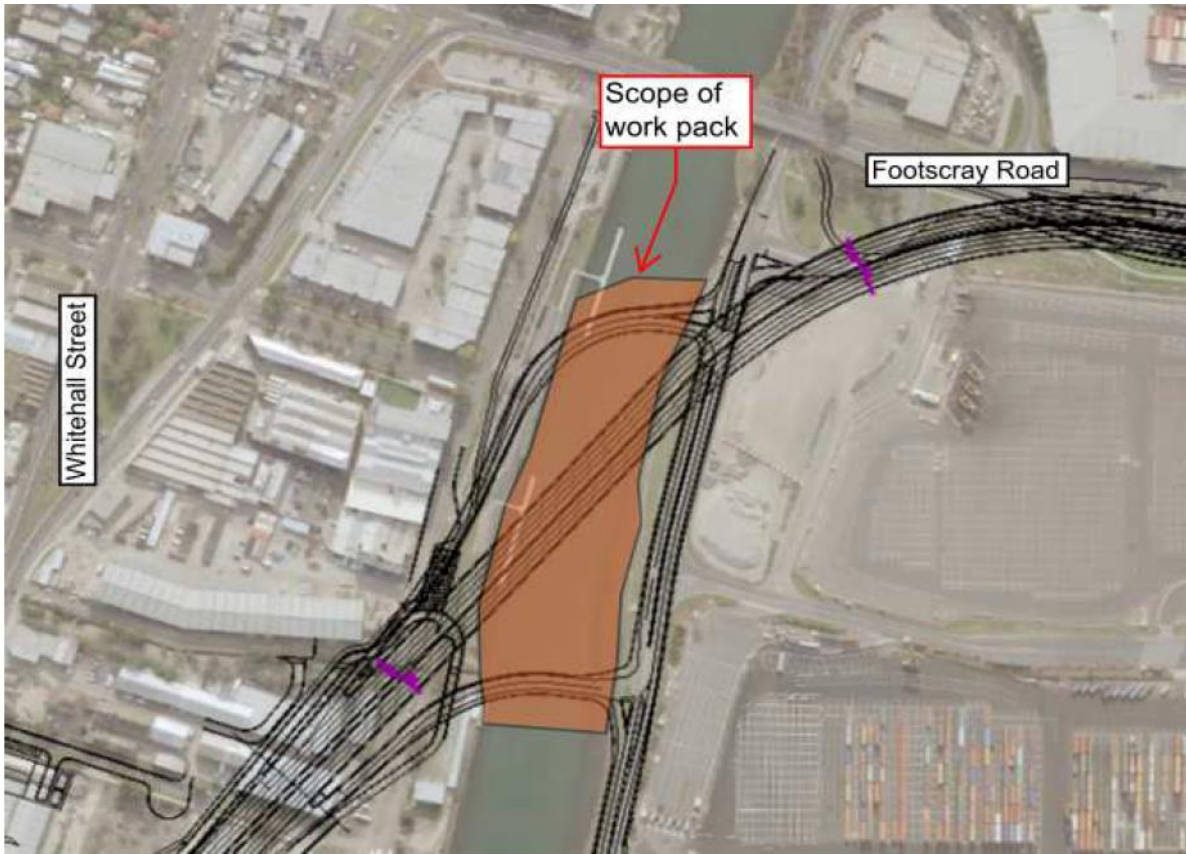


Figure 1: Work Pack Scope Layout

This notice is a direction of the Harbour Master pursuant to section 232 of the *Marine Safety Act 2010* (Vic)
The requirements of section 232(2) have been taken into account.

Victorian Notices to Mariners can be downloaded from the Victorian Ports Corporation (Melbourne) website
www.vicports.vic.gov.au



This notice is a direction of the Harbour Master pursuant to section 232 of the *Marine Safety Act 2010* (Vic)
The requirements of section 232(2) have been taken into account.

Victorian Notices to Mariners can be downloaded from the Victorian Ports Corporation (Melbourne) website
www.vicports.vic.gov.au