

NOTICE TO MARINERS

GIPPSLAND PORTS



The following Notice to Mariners is published for general information.

AUSTRALIA

VICTORIA

NOTICE TO MARINERS No.377 OF 2018

PORT OF GIPPSLAND LAKES

GAZETTE NOTICE – NEW WATERWAY RULE

TRANSIT ONLY ZONE ESTABLISHED

DATE: 17th December 2018 – with immediate effect.

DETAILS: Mariners are advised that in accordance with a publication in the Victorian Government Gazette a new Waterway Rule has been added to the Victorian Vessel Operating and Zoning Rules (VOZR). The Waterway Rule (Copy attached to this Notice) comes into effect immediately, per Schedule 104 Clause 104.8 of the VOZR.

The ocean access entrance to the Gippsland Lakes supports the maritime industry including offshore and inshore charter operations, commercial fishing operations, offshore support vessels servicing the Bass Strait oil and gas fields and an ever-increasing number of larger recreational vessels seeking fishing grounds offshore or voyages throughout the Gippsland Lakes.

The confluences of the Entrance Channel, The Narrows, Reeve Channel, Hopetoun Channel and Cunningham Arm is a strategically important intersection of waterway channels and the busiest area for vessel traffic on the Gippsland Lakes. The entrance and channels are well marked for night navigation which is also common practice.

Several navigation hazards and risks were identified in this area as a result of strong tidal flows and currents, increasing and diverse vessel traffic and conflicting waterway usage, especially at night.

The Rule affects all vessels excluding Gippsland Ports vessels engaged in dredging operations, infrastructure construction and maintenance and hydrographic survey.

The Rule establishes a Transit Only Zone in the area as delineated on the attached Map 1. Vessel operators must not permit a vessel to be anchored in or allow the vessel to drift in or set fishing equipment in the Transit Zone.

NOTICE TO MARINERS

GIPPSLAND PORTS



Further information is available from Gippsland Ports on 0351 500 500.

**CHART
AFFECTED:** Aus. 182

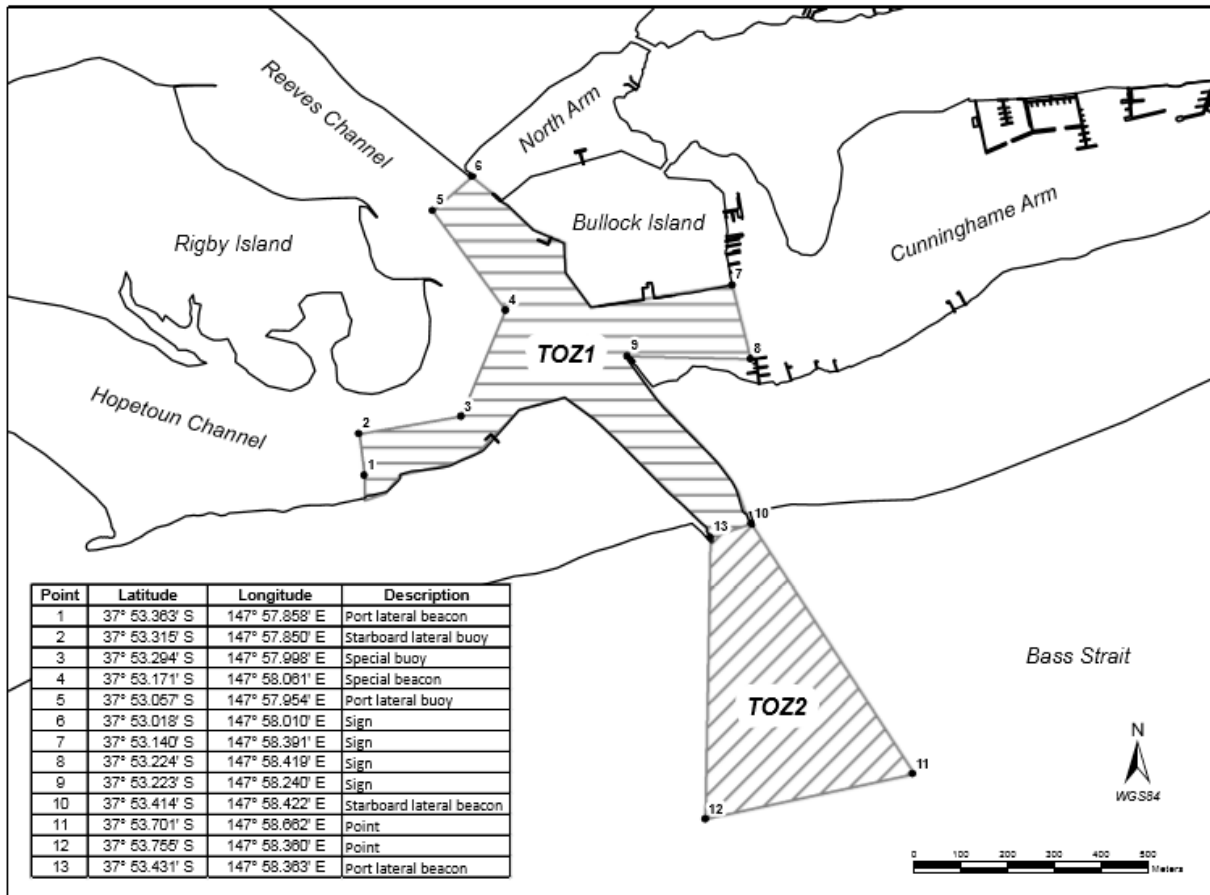
**PUBLICATIONS
AFFECTED:** Gippsland Ports Waterways Online web map available at;
www.gippslandports.vic.gov.au/boating/waterways-online

FURTHER NOTICE: No further notice shall be issued.

**CAPT. BEVIS HAYWARD
HARBOUR MASTER**

NOTICE TO MARINERS

GIPPSLAND PORTS



Victoria Government Gazette

No. S 566 Friday 14 December 2018
By Authority of Victorian Government Printer



Marine Safety Act 2010
Section 184

WATERWAY RULE

I, Rachel Gualano, Director Maritime Safety (as delegate of the Director, Transport Safety) make the following waterway rule under section 184 of the **Marine Safety Act 2010**.

SCHEDULE 104

Waters – The Local Port of Gippsland Lakes

Waterway Manager – Gippsland Ports Committee of Management Inc.

After Clause 104.7 insert:

104.8 Exclusive use and special purpose areas for the purposes of Clause 13.

The operator, master or person in charge of a vessel must not use the Transit Only Zone 1 and Transit Only Zone 2 delineated on Map 1 below other than for transiting of the vessel through the area, excluding vessels berthed in areas set aside for the purpose of berthing, and must not permit the vessel to be anchored in or allow the vessel to drift in or set fishing equipment in the Transit Zones.